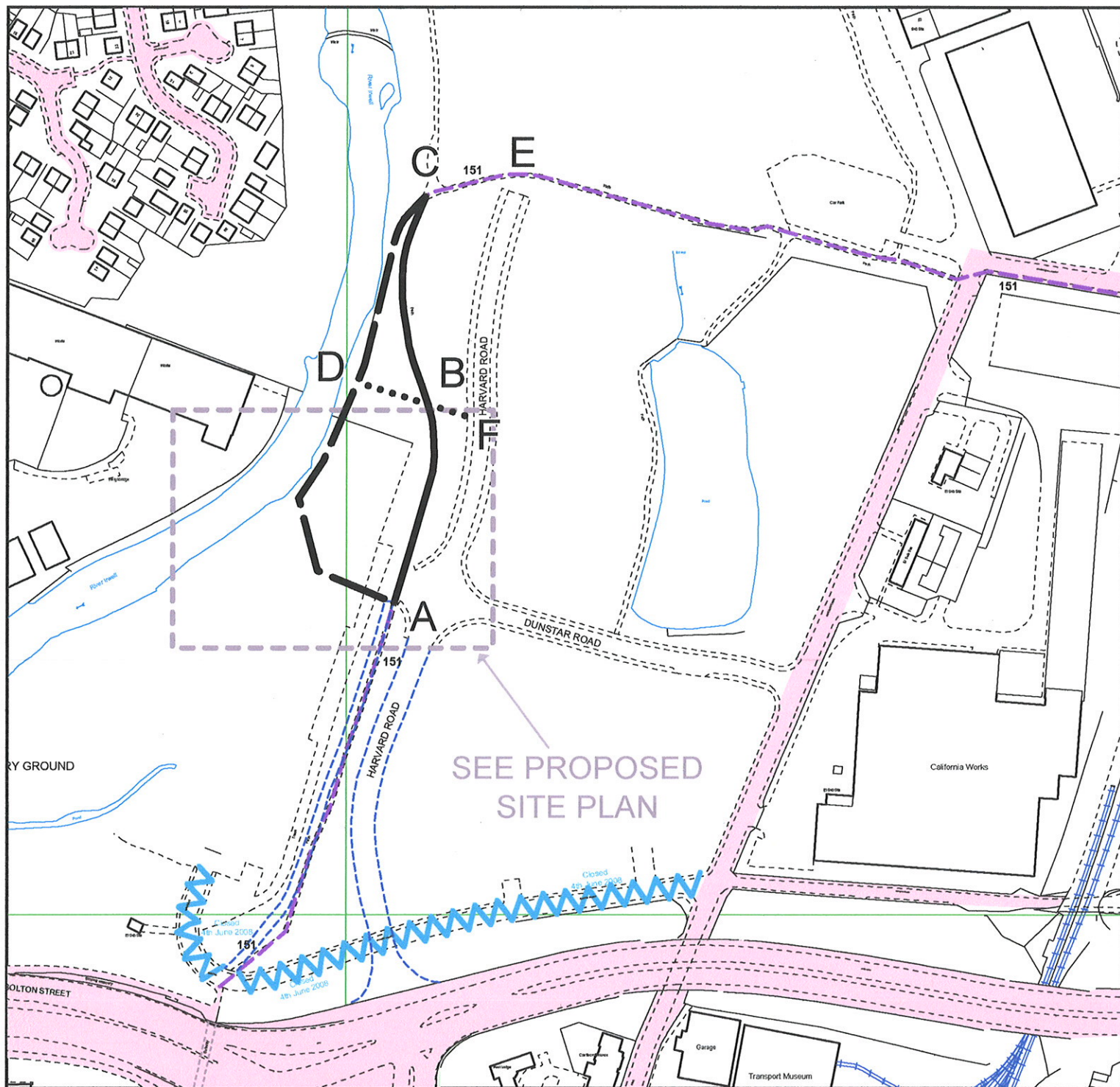


Adopted Highway
 Definitive Footpath
 Diversion Path

Path to be Diverted
 Footpath Creation



PLAN 1



This plan is for guidance purposes only and the Council do not accept any liability whatsoever as to the accuracy of the information contained within it, or from any loss or damage resulting from reliance upon it.

PHOTOGRAPHIC COPY LIABLE TO DISTORTION IN SCALE

Reproduced from the Ordnance Survey mapping with the permission of the Controller of Her Majesty's Stationery Office. (C) Crown Copyright. Unauthorised reproduction infringes Crown Copyright and may lead to civil proceedings. 100023063/2009.

PLAN PRW/151/BURY/DC/1
 SCALE 1:2500
 DRAWN BY DC
 OS No. SD8011SW
 DATE November 2009

**Environment & Development
 Services**
 Engineering Division
 Lester House
 21 Broad Street, Bury, BL9 0AW
 Telephone 0161 253 5828
 Fax 0161 253 5280

